



QUALITY-DRIVEN COST-EFFECTIVE

turnkey electronic manufacturing solutions

Our History

Cherrytech is celebrating 25 years of working in the electronics industry as a Contract Electronics Manufacturer.

Our Story

Cherry Component Solutions was started in 1997 and led to the incorporation of Cherrytech Ltd in 2001. Cherrytech has continued to grow year on year and currently employs 150 staff across 2 sites.

Our Vision

To be the partner of choice to customers globally, offering high quality turnkey electro-mechanical assembly solutions.

Our Mission

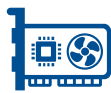
Cherrytech. Providing quality-driven and cost-effective turnkey electronic manufacturing solutions to our customers.

What We Do



PCB Assembly

We provide the very latest in PCB assemblies and electronics manufacturing.



Electro-Mechanical Assembly

Comprehensive range of full box builds and integration solutions from PCBA to enclosure



Cable Assembly

Manufacturing a wide range of wire solutions.



Supply Chain

We are experts in all aspect of Supply Chain and Procurement.

Why Choose Us



Cherrytech provides low cost, quality driven solutions to it's customers. Our dedicated and professional team will meet your requirements. **Call us today.**



sales@cherrytechgroup.co.uk



cherrytechgroup.com



Unit 4, The Meadows,
Waterberry Drive, Waterlooville,
Hampshire. England. PO7 7XX



CONTACT US
+44 23 9223 1205

EFFICIENCY IN EVERY DETAIL

transform your products with cem excellence

Our Services

PCB Assembly

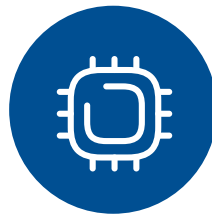
Cherrytech excels in cutting-edge PCB assembly, covering through-hole to advanced surface mount technologies like μ BGA, 0201, and fine pitch. Our IPC-610 trained team ensures quality in an environment of continuous improvement. With extensive market experience, we process PCBs from prototypes to volume production. Complementing our assembly are rigorous inspections using AOI and X-Ray equipment. Precision and expertise converge at Cherrytech for your electronic solutions.

Cable Assembly



We excel in wire assembly and potting, from basic flying leads to intricate wiring harnesses. Our skilled team ensures meticulous integration, meeting the unique specifications of your projects. Our wire assemblies adhere to the highest industry standards, embodying reliability and precision.

Electro-Mechanical Assembly



Cherrytech offers Electro-Mechanical Assembly, providing a comprehensive range of full box builds and integration solutions—from PCBA to enclosure. Trust us for streamlined assembly services that seamlessly bring your electronic systems to life.

Supply Chain




As part of Cherrytech's services we deliver optimal supply chain solutions at every development stage. With a highly experienced purchasing team in both the UK and Thailand, we ensure a seamless and efficient procurement process for your project's success.



 sales@cherrytechgroup.co.uk

 cherrytechgroup.com

 Unit 4, The Meadows,
Waterberry Drive, Waterlooville,
Hampshire. England. PO77XX



CONTACT US
+44 23 9223 1205