



Cherrytech
GROUP



Cherrytech
GROUP



Cherrytech
GROUP



Cherrytech
LIMITED



Cherrytech
ASIA LIMITED



CherryLux
LIGHTING



Quarndon
COMPONENTS



Cherrytech
GROUP

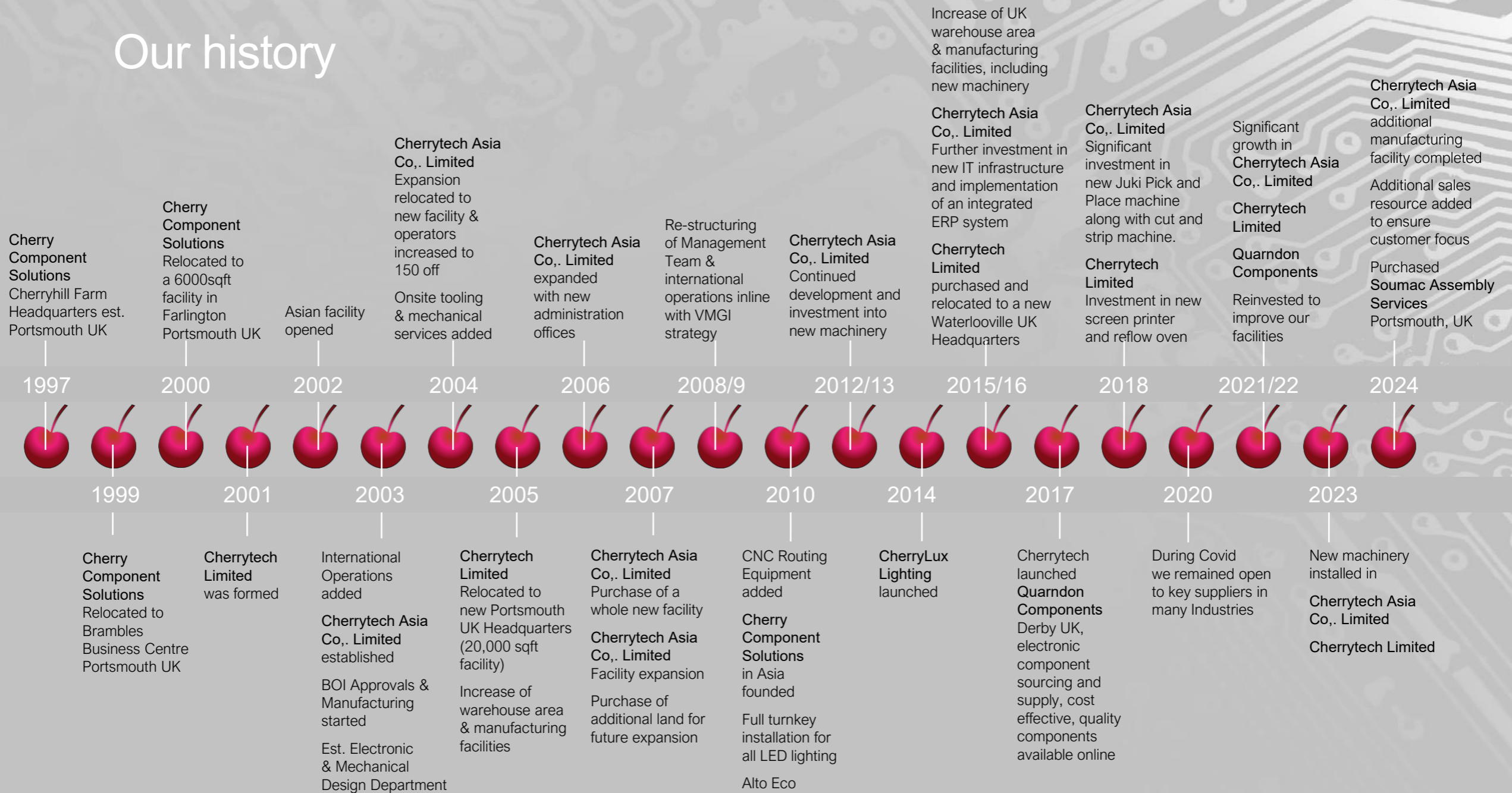
About us

- The Cherrytech Group is an innovative EMS provider in the field of electronic engineering and manufacturing
- Providing comprehensive turnkey solutions, utilising our extensive knowledge to meet customer requirements
- Manufacturing and supplying solutions to a global market
- 170+ employees worldwide
- £14M turnover (2024)
- ISO 9001 accredited



Cherrytech GROUP

Our history





Cherrytech
GROUP

Market sectors



Aerospace



Automotive



Communication



Consumer



Healthcare



Industrial



Medical



Military



Renewable Energy



Cherrytech
GROUP

Core competencies

- Packaged electronic solutions
- PCBA (SMT & THT)
- Cable assemblies/harnesses
- Fabrication services
- Live & obsolescence component sourcing
- Project design





Capabilities

PCBA

- Multiple SMT lines, (0201 to 30 mm, BGA One with large board capacity, 30,000 chp)
- Auto insertion machine for axial and radial components
- Wave solder machine, incorporating chip and lambda waves, using both finger pallets
- BGA re-work station
- Conformal coating
- Automatic AOI inspection facilities
- PCB/functional testing
- Dedicated test department
- X-ray facility

Cable Assemblies/Harnesses

- Over moulded and non-over moulded
- Automatic wire cut and strip machine
- Semi-automatic crimping stations
- Potting and encapsulation
- Automatic and fully programmable cable testers
- Full design capabilities for cable assemblies/harnesses, mechanical/machined metal or plastic components & PCB



Capabilities (continued)

- Cherrytech manufactures product in both UK and Asia locations for world wide distribution and to give total flexibility to its customers
- Cherrytech has established itself globally as a quality supplier that can be relied upon
- Cherrytech is an approved supplier to various key clients for the supply of PCBA, flexi circuit, cable assemblies & box build and is supplying to leading global producers of climate controls, safety equipment, leakage detections and energy saving devices
- Cherrytech supports a fast-turnaround from all of its three sites
- Cherrytech can provide fast response and support in the UK and Asia
- Cherrytech can hold buffer stocks of materials, part build / finished goods in both UK & Asia locations. This gives us the ability to enter in to a vendor managed inventory program with any customer
- Cherrytech can provide DFM on all products to reduce the cost to the customer, a proven track record has already been established with customer engineering teams



Design capabilities

DFM

- Design review and improvement focussing on getting designs out of the lab and manufacturing them as a viable commercial product
- Engineering review to highlight potential improvements in the design and in cost efficiency for manufacture

NPI

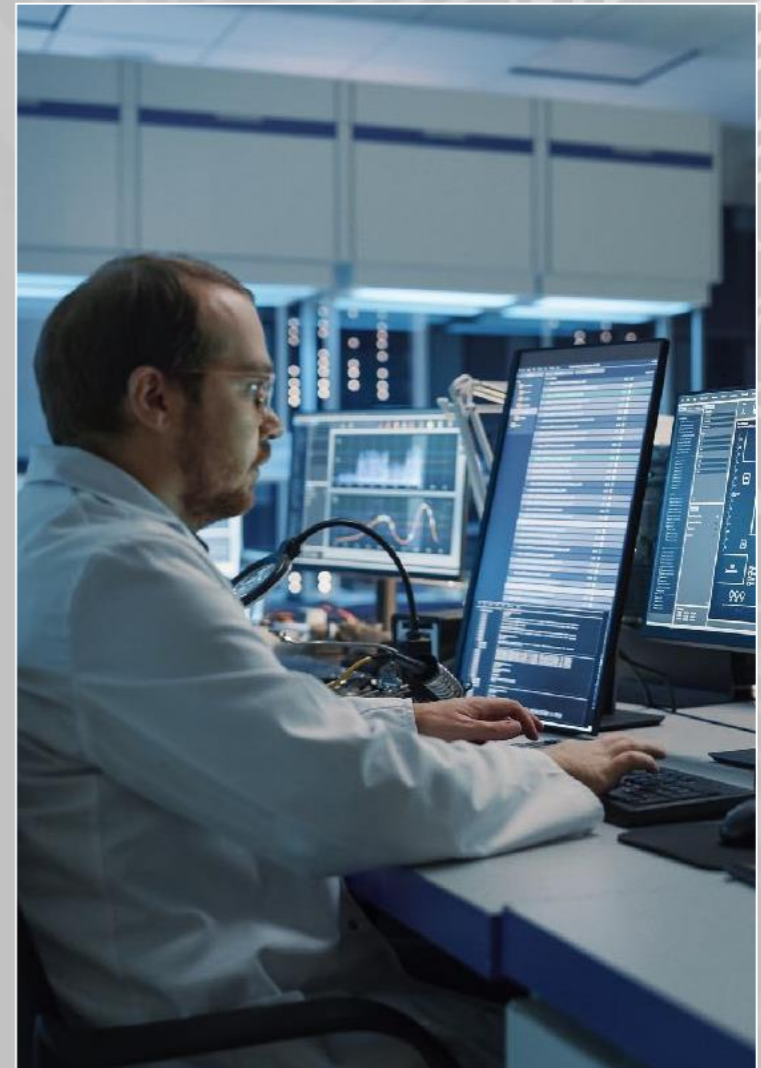
- Effectively structured to minimize time to market, Cherrytech has a history of working on most technologies and mitigates the pitfalls based on that experience
- Work with clients to build and create tailor made for their specific commercial needs

Development

- Experienced throughout high regulatory environments including automotive, defence, industrial, medical & security marketplaces
- Machine learning and AI capability

Refresh & Obsolescence

- Improve and modernise existing products
- Redesign and recertify to “like for like” using modern components to ease aging but relied upon designs, conversion of TH to SMT





Cherrytech
GROUP

What we can do for you

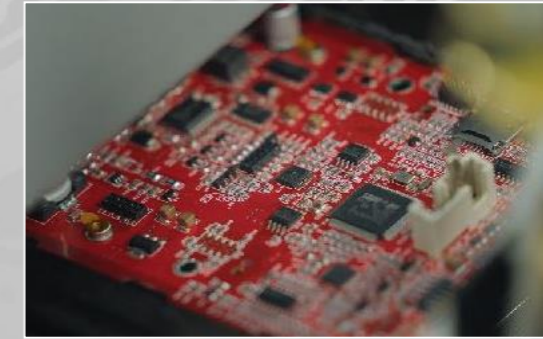
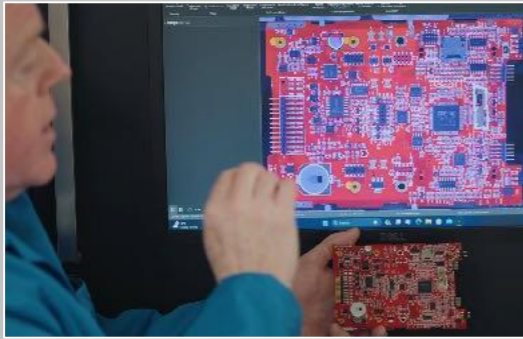
- Cherrytech has already proven its excellence in procurement of components in the UK, Europe, Far East & US. This advantage is now strengthened by the addition of permanent procurement teams based in both the UK and Asia
- Cherrytech Asia has a strong mix of staff covering engineering, procurement and project management
- Cherrytech can install dedicated tooling where required whether in the UK or Asia. Customer equipment qualification would be eliminated and hence reduce risk & timeline
- Cherrytech Asia has board of investment approval which ensures ease of import / export and provides other financial incentives which reduce the overall cost of the operation
- Cherrytech Asia is wholly owned by the Cherrytech Group, this gives us total control over the operation. Many european / western "contract electronic manufacturers" operate on a partner or affiliated basis with Asia based facilities





Cherrytech
GROUP

Facilities and infrastructure (UK & Asia)





Machining & tooling solutions (C-MTS)

- Coating service
- Design service
- EDM sparking erosion
- EDM wire cutting
- Engraving
- Fabrication
- Heat treatment
- High precision CNC machining
- High-precision metal turning service
- Laser cutting and punching
- Plastic moulding
- Precision tube bending
- Rapid prototyping
- Stainless steel & aluminum polishing & welding

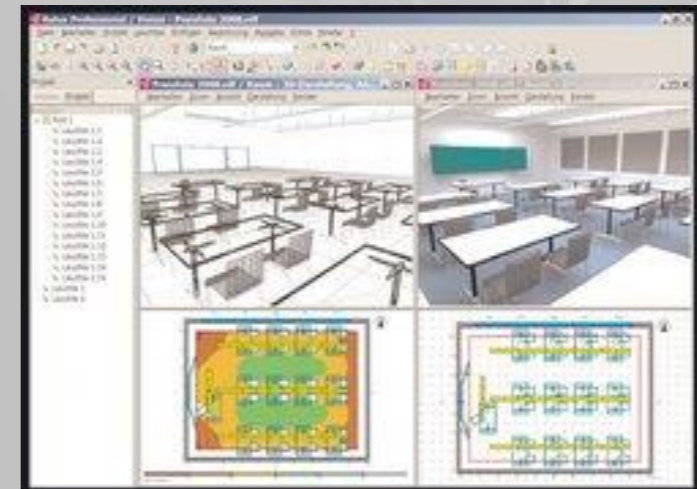




CherryLux Lighting

Energy efficient lighting

- CherryLux Lighting is a designer, supplier, and installer of leading energy efficient lighting technologies into commercial, public, and industrial buildings. We provide a one-stop, turnkey solution for organisations wishing to reduce their lighting costs
- These energy saving solutions are provided using the latest LED technologies. Not only reducing your energy consumption, but we also look to add further savings through the inclusion of daylight & presence detection control systems
- Typically, a retrofit lighting project used to show a return on investment (ROI) of under two years. With the significant increase in energy costs, this ROI is now being reduced significantly, in some cases to a period of less than one year

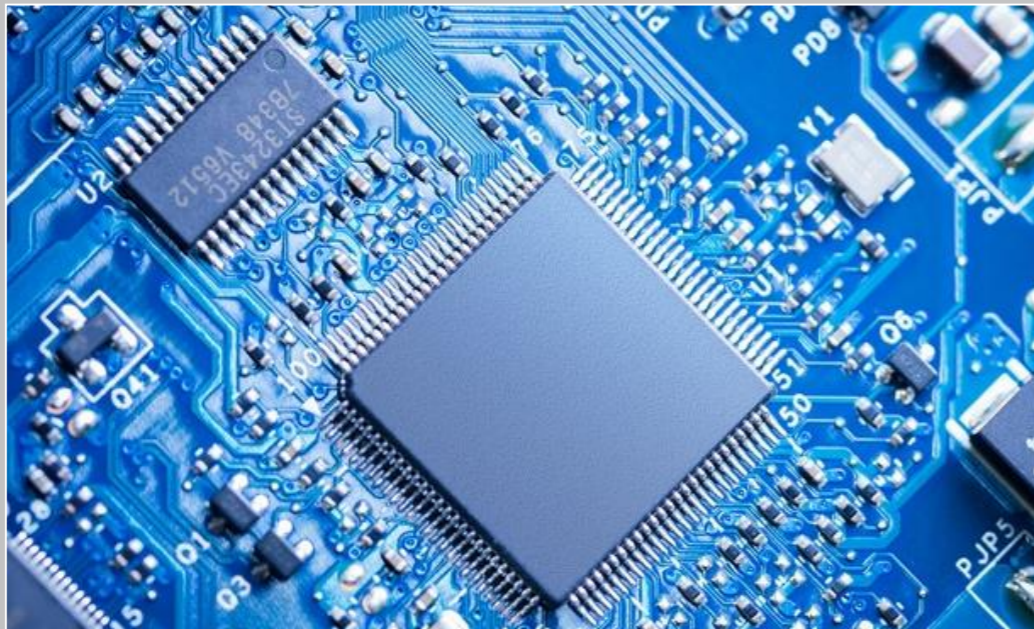




Cherrytech
GROUP

Quarndon Components

First choice supplier for your day to day requirements, shortages, hard to find and obsolete electronic components. We will keep you supply chain moving with cost effective, quality parts on time with our professional sourcing team with the reassurance of a proven company for support.



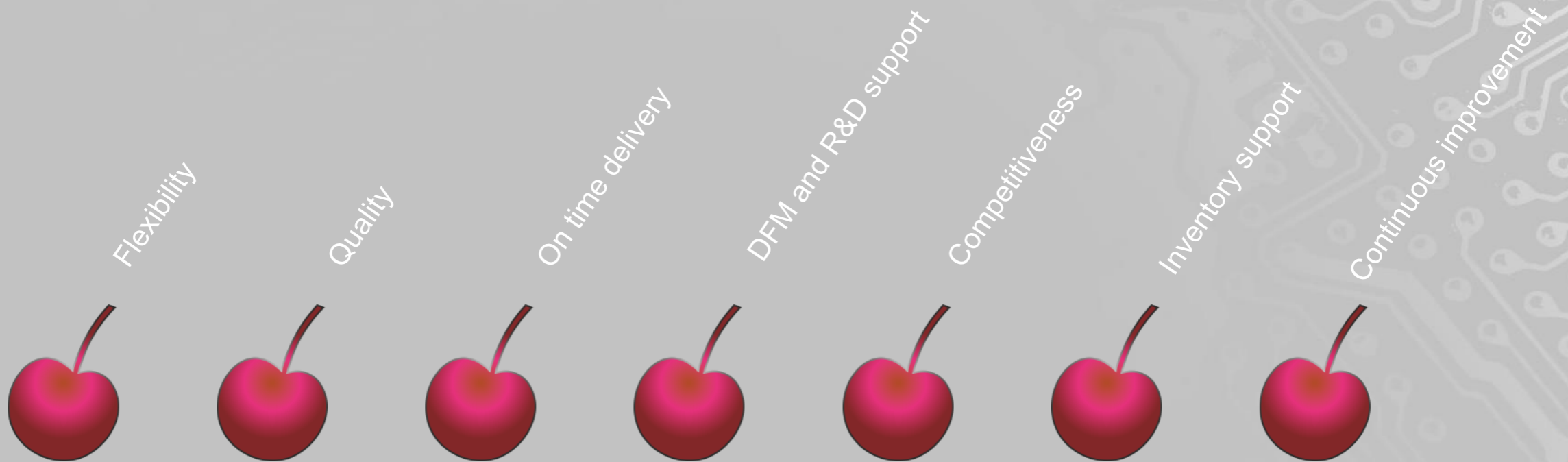
Quarndon
COMPONENTS



Cherrytech
GROUP

Alliance supplier (working with you)

Cherrytech has been an alliance supplier for many years and has enjoyed the participation in watching and helping the products and business grow. We have been Involved and supported moves of business and company structure changes before and understand the needs of the customer.





Cherrytech
GROUP

Certifications / Accreditations

- ISO9001:2015 certification (Cherrytech Limited - LRQA)
- ISO9001:2015 certification (Cherrytech Asia Co., Limited - SGS)
- Cherrytech Group – IPC certified, class 1, 2 & 3
- JOSCAR registered
- Zhaga community member





Our mission

Through competitive pricing, high quality, and on-time delivery
Cherrytech will provide assembly solutions to a global market.

Providing excellent customer service, through strong long-term relationships and becoming the partner of choice

Remain profitable with continued growth and to provide a safe and rewarding
working environment for all employees.

Globally supporting business opportunities worldwide.





Our values

Environmental

RoHS – Products to meet RoHS legislation. Environmentally friendly recycling programs in place for all waste.

Health & Safety

To minimize employee exposure to risk. Ensure safety standards are to the highest levels.

Ethical

High Standards for staff conduct. No child labour at our locations or supplier locations.

Regulated working hours for all employees.

No discrimination on sex, age, political or religious grounds.



Cherrytech
GROUP

Contact us

Cherrytech Limited

t: +44 (0) 23 92 231205
w: cherrytechgroup.com
e: sales@cherrytechgroup.co.uk

CherryLux Lighting

t: +44 (0) 23 92 231205
w: cherryluxlighting.co.uk
e: info@cherryluxlighting.co.uk

Quarndon Components

t: +44 (0) 23 92 231205
w: cherrytechgroup.com
e: sales@quarndoncomponents.co.uk

Unit 4 The Meadows
Waterberry Drive
Waterlooville
Hampshire
PO7 7XX
United Kingdom

Cherrytech Asia Co., Limited

264-264/1 Moo 10
Chiangmai - Lampang Rd
T.Umong, A. Muang
Lamphun
51150
Thailand

t: +66 (0) 53 552 915
w: cherrytechgroup.com
e: sales@cherrytechgroup.co.uk



Cherrytech
GROUP